

Primary care and specialist care

When a person with HIV (who needs chronic care and treatment) moves to another country, a priority concern is usually obtaining HIV medication. However, after you have gained access to the health system (see the respective sheet), you should bear in mind the difference between primary care and specialist care so you can navigate Spain's healthcare system better and receive the appropriate care (including HIV).



Primary care

Primary care is generally **the gateway to the Spanish national health service**. It is the first place a person goes to when they have a health problem. They receive treatment from family doctors (general practitioners) and from nursing professionals. Its main purpose is to prevent disease, to promote healthy lifestyle habits and to provide care for common medical problems.

As well as providing care for purely physical health issues, these centres are also staffed by social workers, whose functions include working with vulnerable groups and addressing their social problems.

When to seek primary care

As mentioned, this is the first stage in medical care and the place you should go if you have any symptoms of fever, pain, persistent cough or general discomfort.

If your condition requires the attention of a specialist (HIV for example), the primary health centre will refer you to the respective specialist service.

You can also make an appointment with a social worker who can tell you about the care resources available.

Where to find it

Mainly in Primary Healthcare centres. Primary healthcare, which stands out for usability and equality of access, reaches citizens in their own homes when necessary.

Specialist care

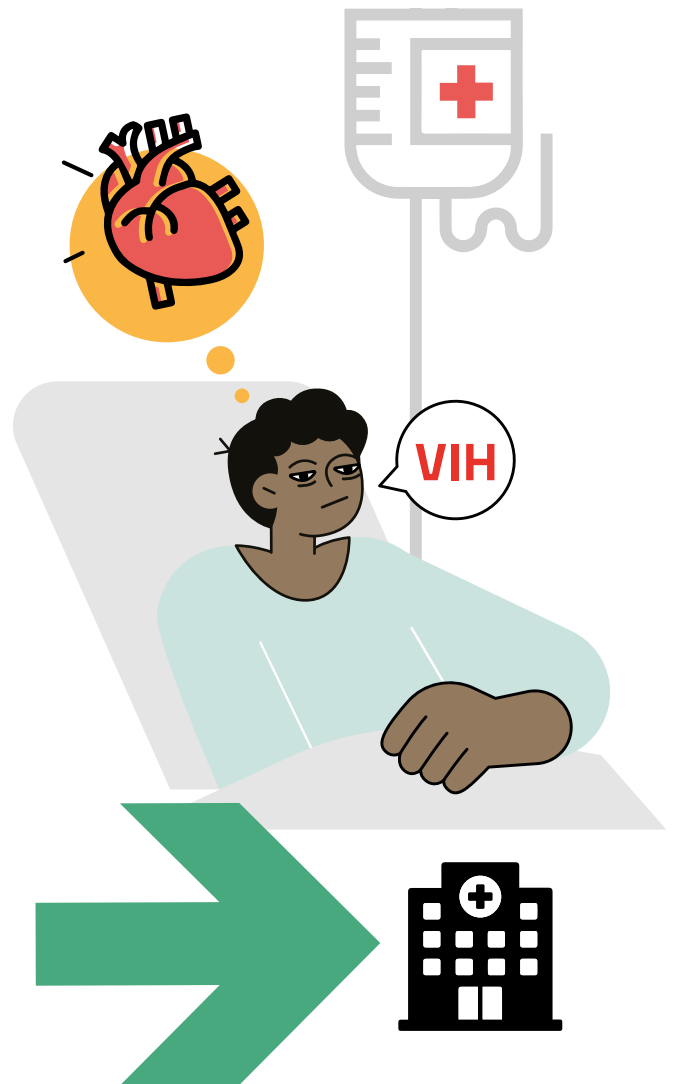
Specialist care is a secondary level of medical care and **involves more specific treatment of different diseases and disorders**. Treatment is provided by specialists in, for example, cardiology and surgery, etc. HIV is also treated and monitored (after the respective referral) in specialist care.

When to seek specialist care

As mentioned, primary care professionals refer patients to these services. Except in emergency or life-threatening cases, you would therefore only go to a specialist if referred either by the primary healthcare centre, or to be monitored by the service itself.

Where to find it

Specialist care is provided at **Speciality Centres and Hospitals**. For HIV, the hospital will monitor you and treat it.



gt grupo de trabajo sobre tratamientos del VIH
ENTIDAD DECLARADA DE UTILIDAD PÚBLICA
ONG DE DESARROLLO



¿TIENES DUDAS SOBRE EL TEMA? PREGÚNTANOS

Tel. 93 458 26 41

Descargo de responsabilidad

La información contenida en esta ficha no pretende sustituir la recibida por el médico. Las decisiones referentes a la salud siempre deberían tomarse tras consultar con los profesionales sanitarios. La información médica puede quedar desactualizada con rapidez.

Si te surge alguna pregunta tras leer esta ficha, te aconsejamos hablar con tu médico o enfermera o llamar a gTt-VIH, al 93 458 26 41, para comprobar si existe alguna novedad relevante al respecto.

www.gtt-vih.org

SI TE HA PARECIDO ÚTIL E INTERESANTE EL CONTENIDO, COMPÁRTELO.

SUBVENCIONA



POR SOLIDARIDAD OTROS FINES DE INTERÉS SOCIAL



SECRETARÍA DE ESTADO DE SANIDAD
DIRECCIÓN GENERAL DE SALUD PÚBLICA Y SEGURIDAD EN SALUD
DIVISIÓN DE CONTROL DE ESTABLECIMIENTOS Y TUBERCULOSIS

Generalitat de Catalunya

Salut / Agència de Salut Pública de Catalunya



Diputació de Barcelona

Àrea d'Iguatallat i Sostenibilitat Social



Ajuntament de Barcelona

COLABORA



ETIS
EQUIP DE TREBALL SOBRE IMMIGRACIÓ I SALUT



eSPiC
Equip de salut pública i comunitària